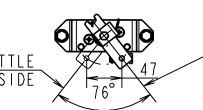
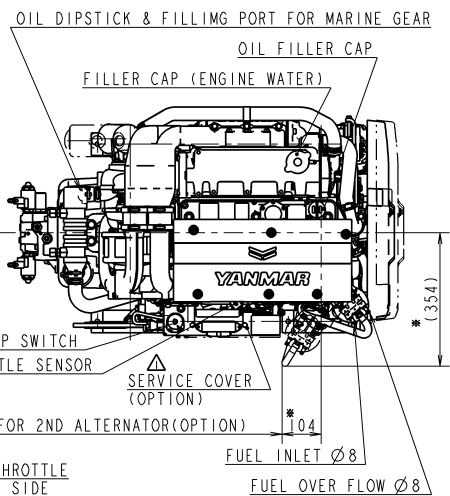
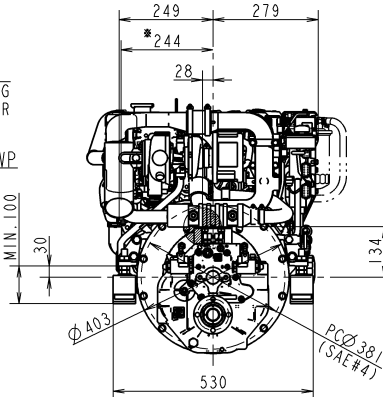
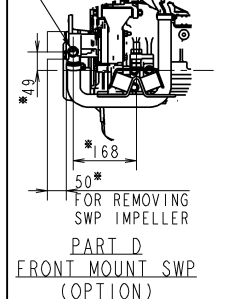
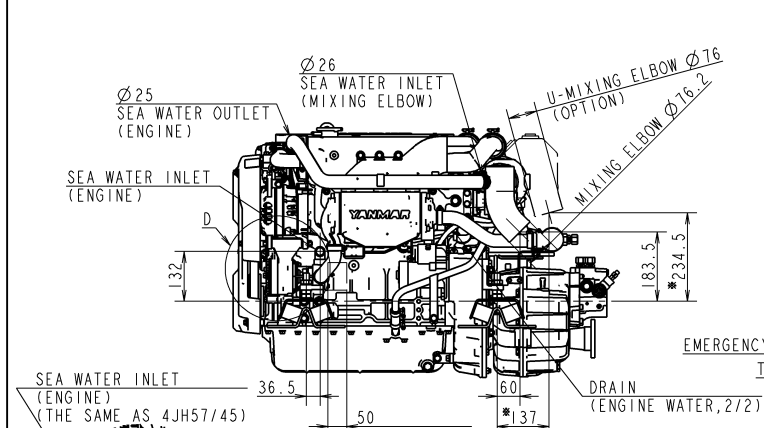


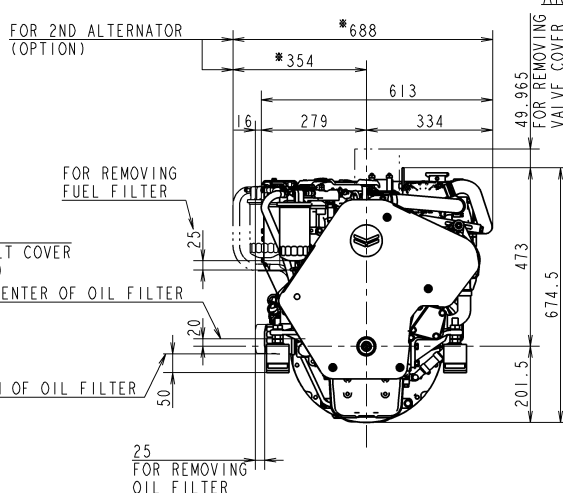
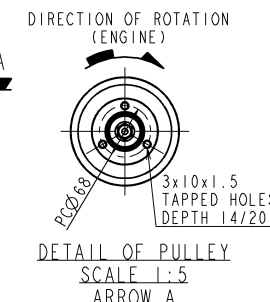
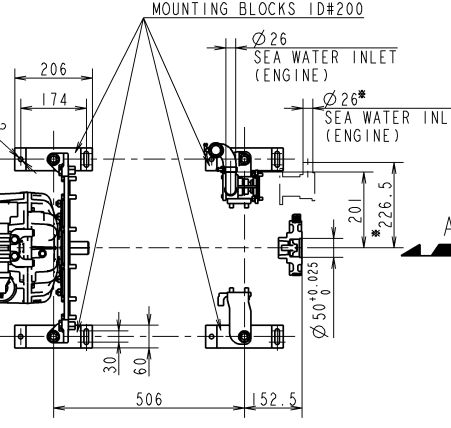
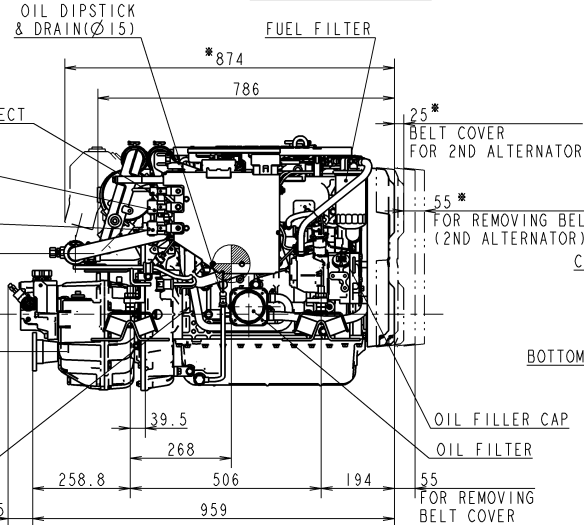
# CAREER

(YDSBD-16002)  
REV.1(2018.3.20) CHANGE TOP COVER AND BELT COVER  
(YDSBD-18002)



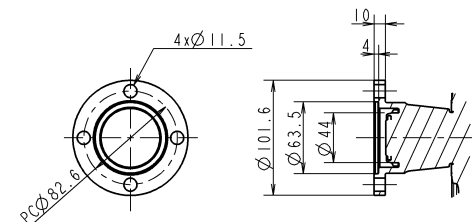
THROTTLE SENSOR  
SCALE 1:5

SMARTASSIST-DIRECT  
TO BACKUP PANEL (GREEN CONNECTOR)  
TO CONTROL PANEL (GRAY CONNECTOR)



- NOTE
1. MOUNTING BLOCKS ARE COMPRESSED ABOUT 4mm BY ENGINE WEIGHT. DIMENSIONS OF MOUNTING BLOCK IN THIS DRAWING ARE WITHOUT ANY DEFORMATION.
  2. MOUNTING BLOCKS ARE EQUIPPED FOR STANDARD ACCESSORY.
  3. THE FIGURES MARKED WITH \* SHOW THE DIMENSIONS WITH U-MIXING ELBOW OR OPTIONAL PARTS.
  4. ● SHOWS THE CENTER OF GRAVITY.

SPECIFICATIONS						
Model			4JH110		4JH80	
Continuous Power(ISO 8665)			kW/min <sup>-1</sup>		73.6 / 3101	
Fuel Stop Power			Propeller shaft(ISO 8665)		kW/min <sup>-1</sup>	
			Crankshaft(ISO 8665)		kW/min <sup>-1</sup>	
Reduction ratio			1.97 / 2.80		---	
Dry mass			kg		Approx. 262	
Direction of Rotation at Output Coupling (Forward)			BOTH			



DETAIL OF COUPLING  
SCALE 1:3  
ARROW B

SEC. MANAGER 宮崎		MODEL		4JH 110		4JH 80		SCALE		1:10	
CHECKED 北本		SPECIALIST		QTY		-		-		MATERIAL	
DESIGNED K. Shiga		DRAWN F. Kishida		DATE: Y.M.D 2017.2.27		NAME		4JH110		xZF25-E-SHIFT	
YANMAR								CODE		REV. 1 B2-29677-0100	
YANMAR CO., LTD. DEVELOPMENT DIV.										DRAW SIZE A2	