

GEN. VOL.	PURCHASING SPECIFICATION	REQUEST FOR APPROVAL		DELIVERY DRAWING		INSPECTING STANDARD		QC-PROCESS	
		OUTSIDE	INSIDE	S MAX	5 TO	10 TO	18 TO	30 TO	L-CAST

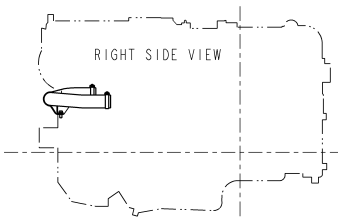
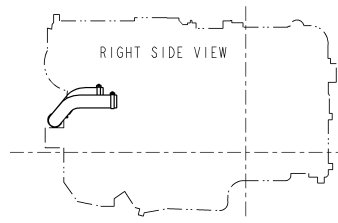
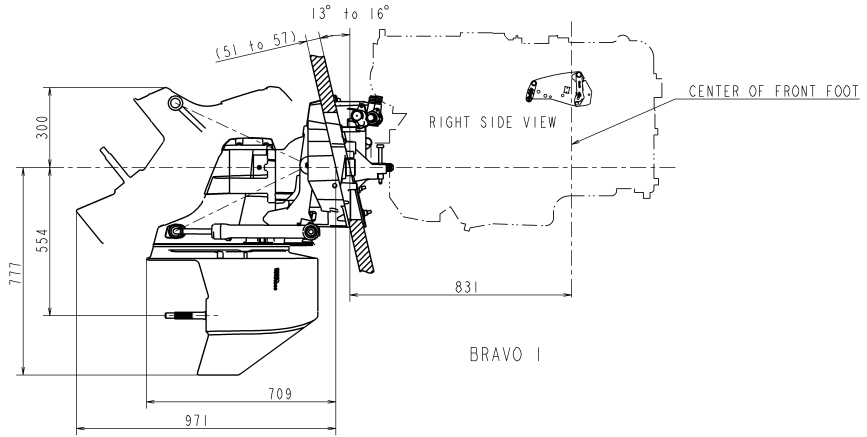
120 MAX	120 TO	250 TO	400 TO	800 TO	1600 TO	0.5 TO	6	±0.1	400 TO	±1000	±0.8
±1.5	±2.0	±3.0	±4.0	±5.0	±7.0	6 TO	30	±0.2	1000 TO	±2000	±1.2
±1.0	±1.5	±2.0	±3.0	±4.0	±6.0	30 TO	120	±0.3	2000 TO	±4000	±2.0
						120 TO	400	±0.5			

10 TO	50	±3MIN
50 TO	120	±20MIN
120 TO	400	±10MIN
400 MIN		±5MIN

FIGURE DIMENSION	GT.CODE	○ AND ∕:RADIAL
------------------	---------	----------------

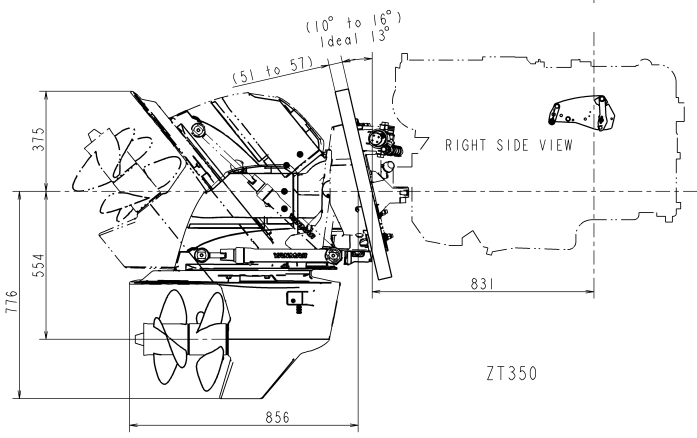
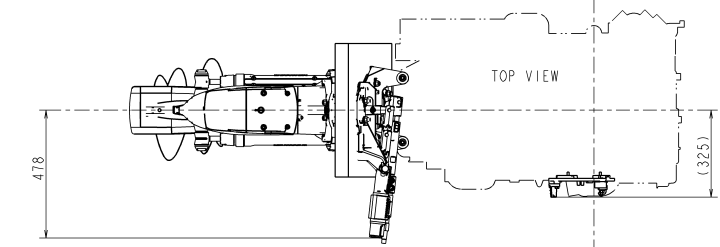
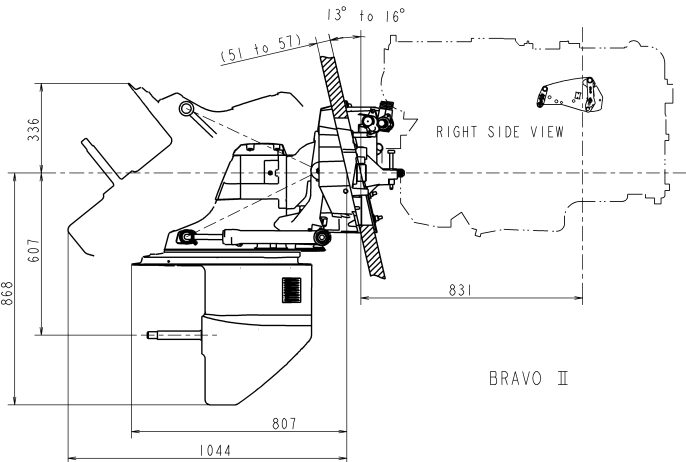
CAREER

(2008.11.25) オプション冷却用冷却水パイプ
 新規作成。
 Release of outline drawing
 for optional parts. (図番)

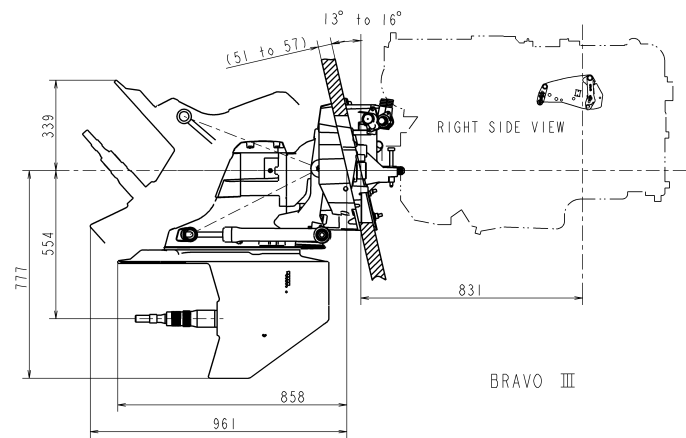


COOLING WATER PIPE FOR BRAVO (STANDARD)
 D19779-49130

COOLING WATER PIPE FOR ZT350 (OPTION)
 D19779-49140



DRIVE UNIT	REDUCTION					DRY WEIGHT(kg(lb))	DIRECTION OF ROTATION
BRAVO I	1.36	1.50	-	-	-	88(194)	COUNTER-CLOCKWISE
BRAVO II	-	1.50	1.65	1.81	2.00	94(207)	CONTRAROTATING PROPS
BRAVO III	1.36	1.50	1.65	1.81	-	98(216)	CONTRAROTATING PROPS
ZT350	-	-	1.65	1.78	-	100(220)	CONTRAROTATING PROPS



NOTES
 REFER TO "B2-19779-0390" DRAWING FOR DETAIL OF ENGINE

CAD data information of this drawing.	
CAD SYSTEM	Pro/Engineer wildfire 2.0
FILE ARCHIVER	ZIP
ARCHIVE FILE NAME	B2-19779-0400_rev0.zip

材料質量 MASS(DRAW)	kg (±%)	1g								MANAGER 梶	
完成質量 MASS(%)	kg (±%)	1g									
SEC. MANAGER CHECKED	SPECIALIST	MODEL	6LPA-STZP2	QTY	1	SCALE	1:10	MATERIAL	-		
DESIGNED	DRAWN	DATE:Y.M.D	NAME	6LPA-STZP2 ENGINE (1/3) OUTLINE DRAWING FOR OPTIONAL PARTS							
T.Miyajima	Y.Kakidachi	2008.11.25		YANMAR							
ARCHIVE FILE NAME			B2-19779-0400_rev0.zip			YANMAR CO.,LTD. DEVELOPMENT DEPT.			CODE	B2-19779-0400	1/1

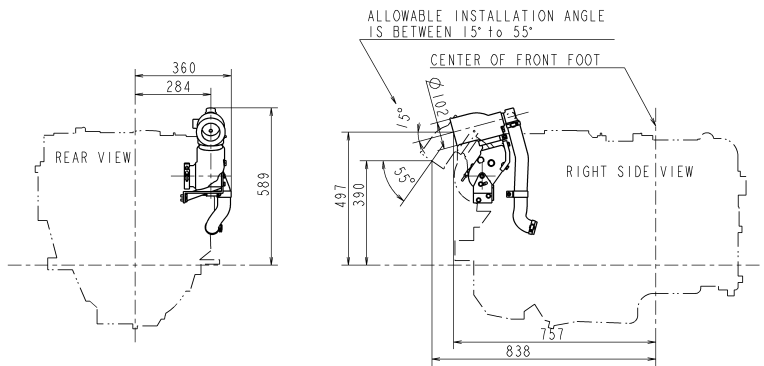
Conform to the former standard V15 V0001J concerning "the limitation of the environmental burden material" for the use of the environmental burden material of this part.

3D-CAD	NOTICE
GEOMETRIC	
KIND OF TOLERANCE	
STRAIGHTNESS	
ROUNDNESS	
PARALLELISM	
PERPENDICULARITY	
SYMMETRY	
POSITIONAL TOLERANCE	
CONCENTRICITY	
COINCIDENCE	
LOCATION	
ORIENTATION	
PERPENDICULARITY	
SYMMETRY	
POSITIONAL TOLERANCE	
CONCENTRICITY	
COINCIDENCE	
LOCATION	
ORIENTATION	
PERPENDICULARITY	
SYMMETRY	
POSITIONAL TOLERANCE	
CONCENTRICITY	
COINCIDENCE	
LOCATION	
ORIENTATION	

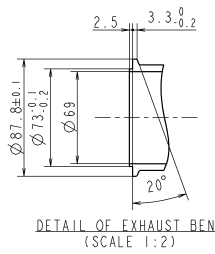
GENERAL TOLERANCE	PURCHASING SPECIFICATION	REQUEST FOR APPROVAL	DELIVERY DRAWING	INSPECTING STANDARD	QC-PROCESS
-------------------	--------------------------	----------------------	------------------	---------------------	------------

GEN. TOL.	TRAFT ANG.	OUTSIDE	INSIDE	NOMINAL DIM	S MAX	5 TO	10 TO	18 TO	30 TO	120 TO	250 TO	400 TO	800 TO	1600 TO	0.5 TO	6	±0.1	400 TO	±1000	±0.8	10 MAX	±IDEG.
CAST	3/100	2/100	3/100	DIVISION	±1.0	±1.5	±2.0	±3.0	±3.5	±1.0	±1.5	±2.0	±3.0	±4.0	±1.5	±2.0	±2.0	1000 TO	±2000	±1.2	50 TO	±20MIN
L-CAST				SHELL	±0.8	±1.0	±1.5	±2.0	±2.0	±1.0	±1.5	±2.0	±3.0	±4.0	±1.0	±1.5	±2.0	2000 TO	±4000	±2.0	120 TO	±10MIN
L-CHIP																					400 MIN	±5MIN

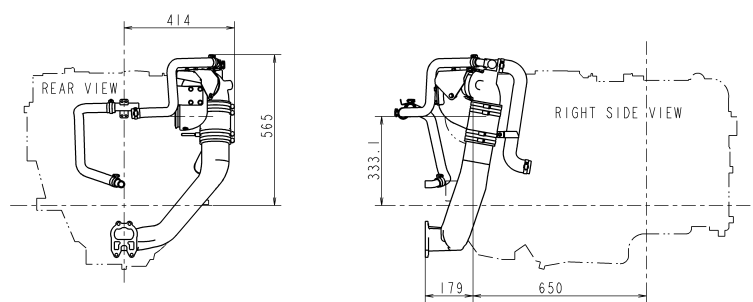
FIGURE DIMENSION	GT CODE	CAREER
		refer to 1/3 DWG.



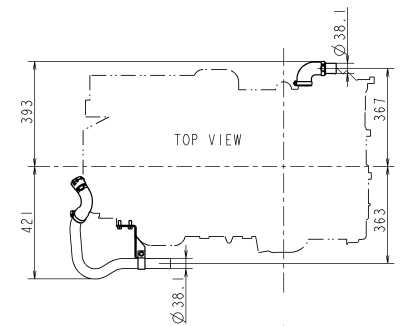
HIGH RISER EXHAUST (OPTION)
 D19778-13270
 D19773-13310
 D19778-49170



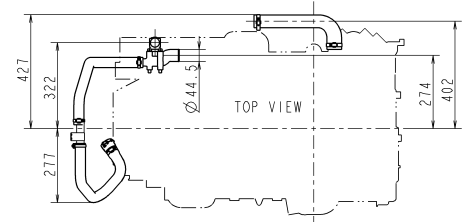
DETAIL OF EXHAUST BEND
 (SCALE 1:2)



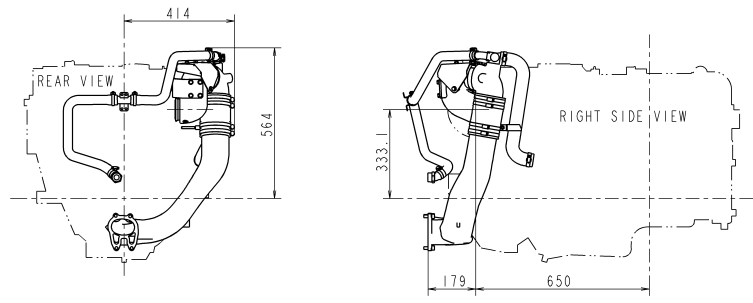
DRIVE EXHAUST FOR BRAVO (STANDARD)
 D19778-13280
 D19773-13310
 D19778-13410
 D19778-49140



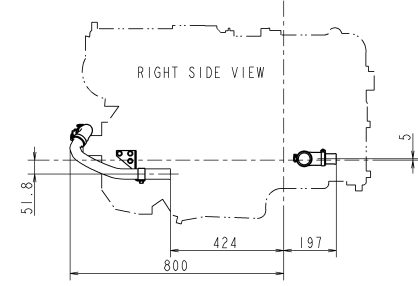
RIGHT SIDE VIEW



RIGHT SIDE VIEW

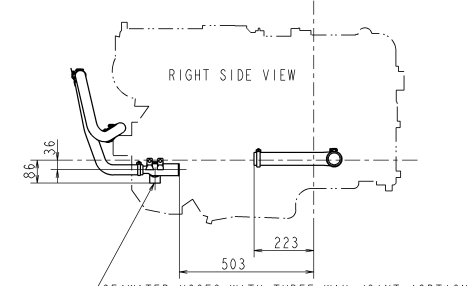


DRIVE EXHAUST FOR ZT350 (OPTION)
 D19778-13280
 D19773-13310
 D19779-13420
 D19779-49090
 D19778-49140



SEAWATER HOSES FOR ZT350 (OPTION)
 D19779-49410

WATER INLET FROM KINGSTON
 (HOSE I.D. Ø38)



SEAWATER HOSES WITH THREE WAY JOINT (OPTION)
 D19779-49400

Conform to the former standard VLS V-0001J concerning "the limitation of the environmental burden material" for the use of the environmental burden material of this part.

3D-CAD

NOTICE	GEOMETRIC TOLERANCE
	KIND OF SYMBOL
	STRAIGHTNESS TOLERANCE
	CIRCULARITY TOLERANCE
	PROFILE FULFILLANCE TOLERANCE
	PLANARITY TOLERANCE
	PARALLELISM TOLERANCE
	PERPENDICULARITY TOLERANCE
	ANGULARITY TOLERANCE
	POSITIONAL TOLERANCE
	COINCIDENCE TOLERANCE
	LOCATION TOLERANCE
	CONCENTRICITY TOLERANCE
	SYMMETRY TOLERANCE

材料質量	kg	完成質量	kg	完成質量	kg
MASS (DRAW)	(±%)	MASS (%)	(±%)	MASS (%)	(±%)
SEC. MANAGER	MODEL	6LPA-STZP2	SCALE	1:10(1:2)	
CHECKED	SPECIALIST	QTY	MATERIAL	-	
DESIGNED	DRAWN	DATE: Y. M. D	NAME	6LPA-STZP2 ENGINE (2/3)	
T. Miyajima	Y. Kakidachi	2008.11.25		OUTLINE DRAWING FOR OPTIONAL PARTS	
YANMAR			CODE	B2-19779-0400	A1
YANMAR CO., LTD. DEVELOPMENT DEPT.					

NEED ○ ○

PURCHASING SPECIFICATION		REQUEST FOR APPROVAL		DELIVERY DRAWING		INSPECTING STANDARD		QC-PROCESS	
TRAFT ANG.	OUTSIDE	NOMINAL DIM DIVISION	S MAX	5 TO	10 TO	18 TO	30 TO	120 TO	250 TO
3/100	3/100	SANDMOLD SHELL	±1.0	±1.5	±2.0	±3.0	±3.5	±1.5	±2.0
			±0.8	±1.0	±1.5	±2.0	±2.0		

L-C-CHIP		L-C-CHIP	
120 MAX	±250	250 TO	±400
±1.0	±1.5	±2.0	±3.0
		±4.0	±5.0
		±6.0	±7.0

0.5 TO	±6	±0.1	400 TO	±1000	±0.8
6 TO	±30	±0.2	1000 TO	±2000	±1.2
30 TO	±120	±0.3	2000 TO	±4000	±2.0
120 TO	±400	±0.5			

10 MAX	±DEG.
10 TO	±50
50 TO	±120
120 TO	±10MIN
400 MIN	±5MIN

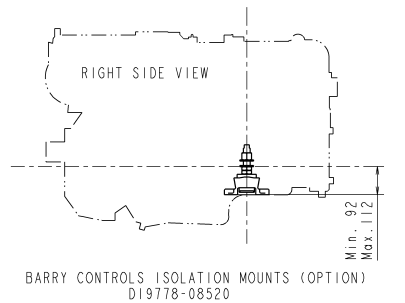
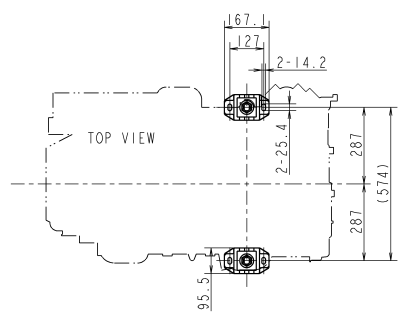
FIGURE DIMENSION

GT.CODE

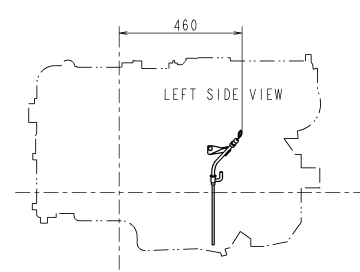
3RD ANGLE PROJECTION

○ AND ∅: RADIAL

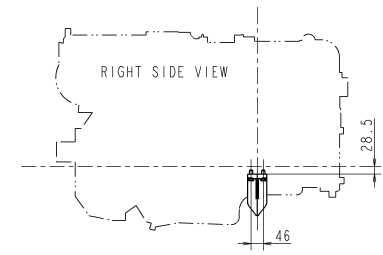
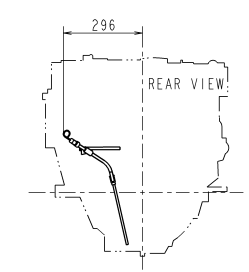
CAREER refer to 1/3 DWG.



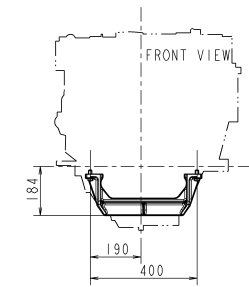
BARRY CONTROLS ISOLATION MOUNTS (OPTION)
D19778-08520



DIPSTICK FOR LEFT SIDE (OPTION)
D19775-34210



BRACE FOR ENGINE FOOT (OPTION)
D19778-08161



3D-CAD

NOTICE	GEOM TECH
	KIND OF SYMBOL
	STRAIGHTNESS TOLERANCE
	PERPENDICULARITY TOLERANCE
	PARALLELISM TOLERANCE
	SYMMETRICALITY TOLERANCE
	POSITIONAL TOLERANCE
	CONCENTRICITY TOLERANCE
	CIRCULAR RUNOUT TOLERANCE
	PROFILE RUNOUT TOLERANCE

材料質量 MASS(DRAW) (g)	1g	完成質量 MASS(%)	1g	MANAGER	梶
SEC. MANAGER	松岡	MODEL	6LPA-STZP2	SCALE	1:10
CHECKED	中村	SPECIALIST	西條	MATERIAL	-
DESIGNED	T.Miyajima	DATE: Y.M.D	2008.11.25	NAME	6LPA-STZP2 ENGINE (3/3) OUTLINE DRAWING FOR OPTIONAL PARTS
YANMAR				CODE	B2-19779-0400
YANMAR CO.,LTD. DEVELOPMENT DEPT.					1/1